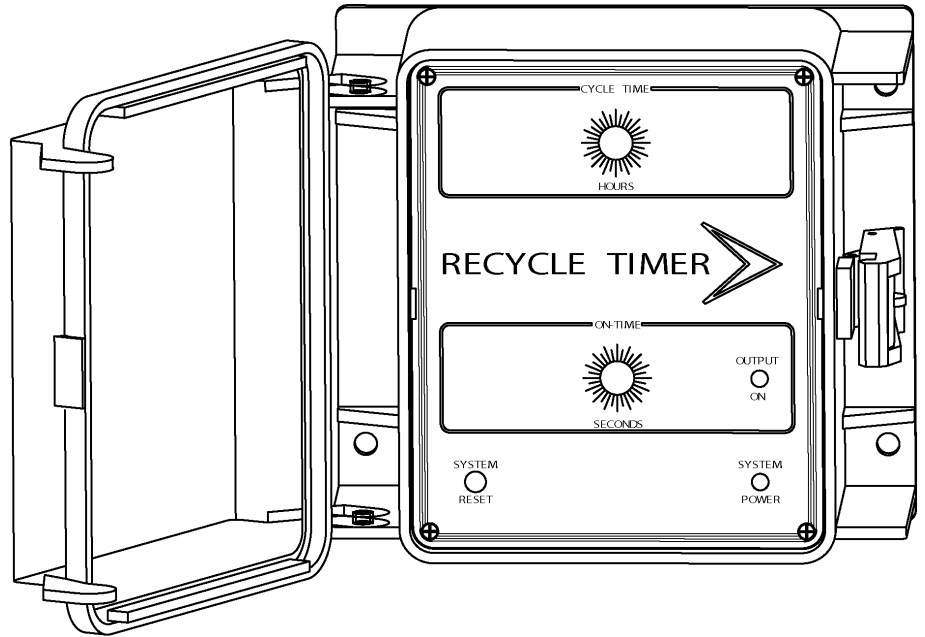


# Analog Timers

**Models**  
**DLT-1**  
**DPT-1**  
**RT-1**



## Key Features

- NEMA 4X Type Enclosure
- Simple to Operate
- Precise Electronic Timing
- LED Indicator Lights
- Prewired Configuration
- Front Panel Settings
- Timer Reset Switch
- 2 Year Replacement Warranty

## Application

Advantage Controls' analog series timers provide digitally accurate timers to control feed pumps or other equipment.

**DLT** feed limit timers start when power is applied and stop when the user set length of limit time has elapsed. Once power is removed the DLT timer automatically resets.

**DPT** percentage timer's relay on timer is adjustable from 0 to 100% of a fixed cycle time. This cycle time is repeated while power is supplied to the unit.

**RT** recycle timers provide a continuously repeated on and off time with both the cycle time length and the on time length user adjustable.

## Options

Your unit may be supplied with one or more options. Option codes will be shown at the end of model number. Example: DPT-1D-2.

- C** - 240 Volt
- D** - Other time Scale - (DLT & DPT only)
  - D-1 0-31 Seconds
  - D-2 0-155 Seconds
  - D-3 0-31 Minutes
  - D-4 0-62 Minutes
  - D-5 0-62 Seconds
  - D-6 0-155 Minutes
  - D-7 0-10 Minutes, 20 Seconds
  - D-8 0-7 hours, 45 minutes
  - D-9 0-310 seconds
- E** - Extra Female cord
- L** - Optional Scales (RT-1 only)  
A cycle time and an ON time must both be selected. Example RT-1L1B

Cycle Time	On Time
<b>1</b> 0-31 hr	<b>A</b> 0-31 seconds
<b>2</b> 0-15.5 hr	<b>B</b> 0-155 seconds
<b>3</b> 0-7.75 hr	<b>C</b> 0-31 min
	<b>D</b> 0-7.75 min
- 5** - Mounted Flow Switch
- W-1** - Single 25 amp output relay.

### NOTES:

1. Other scales are available, consult factory.
2. All timer scales are adjustable in increments equal to the maximum scale time divided by 31.

## Specifications

### Electrical

- **Input:** 120 VAC, 50/60 Hz
  - **Control:** 120 VAC, 2.5 Ampresistive
- Prewired with 8' (243.84 cm) power cord with molded plug. Female output cord with molded plug for each output.

### Timer Settings (Standard)

- **DLT-1:** 0-90 minutes
- **DPT-1:** 0-10.5 minutes
- **RT-1** Cycle Time: 0-7.75 hours  
ON Time: 0-31 minutes

### Enclosure

Heavy duty NEMA 4X type high impact thermoplastic with padlockable gasketed Lexan viewing door.

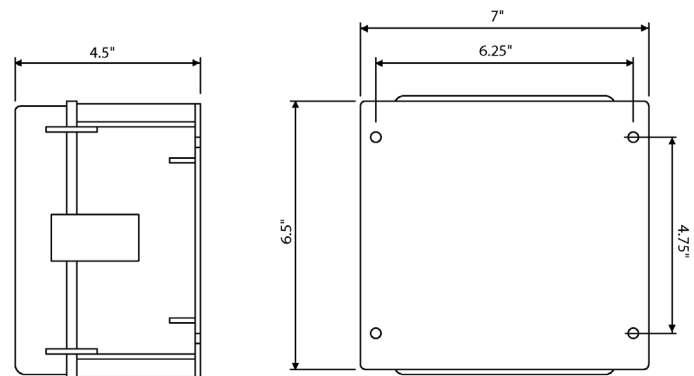
### Environment

Ambient temperature: -40° to 140°F (-17 to 60°C)  
Relative humidity: 0 to 100%

**Shipping Weight:** Approximately 4 lbs. (1.81 kg)

### Dimensions:

W 7" (17.78 cm) x H 6.5" (16.51 cm) x D 4.5" (11.43 cm)



**Get the Advantage**



4700 Harold Abitz Dr  
Muskogee, OK 74403  
800-743-7431 phone  
888-686-6212 fax  
[www.advantagecontrols.com](http://www.advantagecontrols.com)