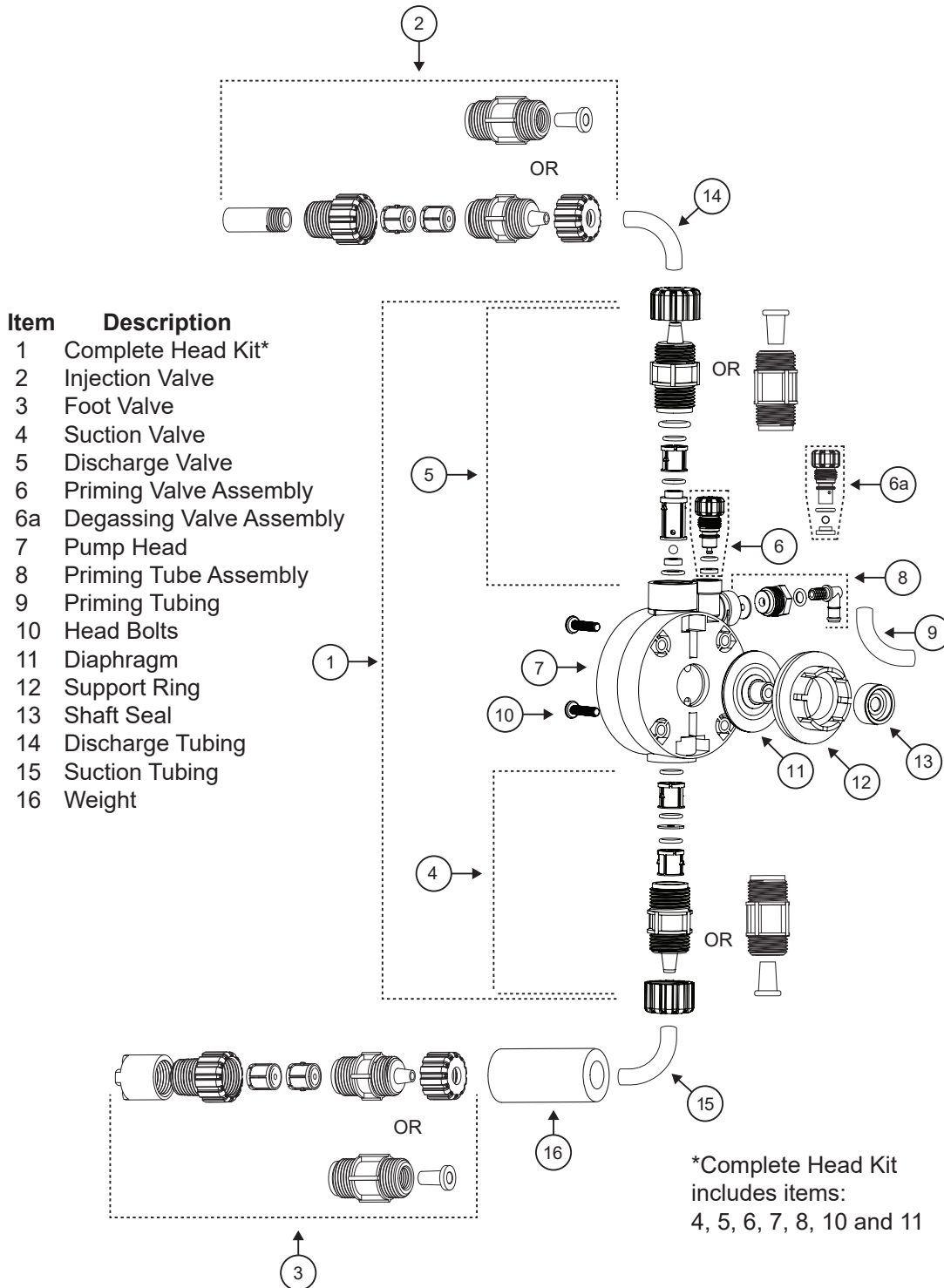


MicroLinx Metering Pumps Liquid End Diagram



Replacement Parts

Getting the right materials of construction for your spare parts is easy. Using positions 6-9 of the pump model number, example: M30X1-**KFCV**. Find the assembly needed and add the codes of your pump's liquid end after the standard prefix part number for the assembly.

NOTES:

1. Complete head assemblies use positions 2 and 3 of the pump model number plus 6-9 to identify the correct part number. Example M30X1-**KFCV** uses a CHL-30-KFCV.
2. Stainless steel heads liquid end is always SFSP and the head kit is CHL-___ - SFSP.
3. Stainless steel heads suction and discharge valve part # is **R00325**.

Part Assemblies

Item	Description	Part Number																																
1.....	Complete Head Assembly.....	CHL- ___ - ___																																
		<table border="0" style="width: 100%;"> <tr> <td style="width: 25%;">Body</td> <td style="width: 25%;">Seat</td> <td style="width: 25%;">Ball</td> <td style="width: 25%;">Connection</td> </tr> <tr> <td>D — PVDF/Degas</td> <td>V — Viton</td> <td>C — Ceramic</td> <td>1 — 3/8" tube</td> </tr> <tr> <td>K — PVDF</td> <td>F — Teflon</td> <td>S — Stainless</td> <td>2 — 1/4" tube</td> </tr> <tr> <td>S — Stainless Steel</td> <td>H — Hypalon</td> <td></td> <td>P — 1/4" MNPT</td> </tr> <tr> <td></td> <td></td> <td></td> <td>R — 1/4" FNPT</td> </tr> <tr> <td></td> <td></td> <td></td> <td>U — 3/8" tube</td> </tr> <tr> <td></td> <td></td> <td></td> <td>V — 3/8" tube</td> </tr> <tr> <td></td> <td></td> <td></td> <td>SS head only.</td> </tr> </table>	Body	Seat	Ball	Connection	D — PVDF/Degas	V — Viton	C — Ceramic	1 — 3/8" tube	K — PVDF	F — Teflon	S — Stainless	2 — 1/4" tube	S — Stainless Steel	H — Hypalon		P — 1/4" MNPT				R — 1/4" FNPT				U — 3/8" tube				V — 3/8" tube				SS head only.
Body	Seat	Ball	Connection																															
D — PVDF/Degas	V — Viton	C — Ceramic	1 — 3/8" tube																															
K — PVDF	F — Teflon	S — Stainless	2 — 1/4" tube																															
S — Stainless Steel	H — Hypalon		P — 1/4" MNPT																															
			R — 1/4" FNPT																															
			U — 3/8" tube																															
			V — 3/8" tube																															
			SS head only.																															
.....	All PVDF Assemblies																																	
2.....	Injection Valve Assembly	INJ-L- K ___																																
	3-Function Injection Valve.....	3FV- K ___																																
3.....	Foot Valve Assembly.....	FTV-L- K ___																																
4.....	Suction Valve Assembly.....	SUC-L- K ___																																
5.....	Discharge Valve Assembly.....	DIS-L- K ___																																
6.....	Priming Valve Assembly.....	PRI-L- K F ___																																
6a.....	Degas Valve Assembly.....	DGS-L- K V ___																																
8.....	Priming Tube Assembly.....	PRT-L- K ___																																
		<table border="0" style="width: 100%;"> <tr> <td style="width: 25%;">Seat</td> <td style="width: 25%;">Ball</td> <td style="width: 50%;">Connection</td> </tr> <tr> <td>V — Viton</td> <td>C — Ceramic</td> <td>1 — for all 3/8" tubing</td> </tr> <tr> <td>F — Teflon</td> <td></td> <td>2 — for all 1/4" tubing</td> </tr> <tr> <td>H — Hypalon</td> <td></td> <td>R — for 1/4" FNPT</td> </tr> </table>	Seat	Ball	Connection	V — Viton	C — Ceramic	1 — for all 3/8" tubing	F — Teflon		2 — for all 1/4" tubing	H — Hypalon		R — for 1/4" FNPT																				
Seat	Ball	Connection																																
V — Viton	C — Ceramic	1 — for all 3/8" tubing																																
F — Teflon		2 — for all 1/4" tubing																																
H — Hypalon		R — for 1/4" FNPT																																

Single Parts

9.	Priming Tubing	R00255
14.	Discharge Tubing 3/8" PE	R00122
	Discharge Tubing 1/4" PE	R00267
15.	Suction Tubing 3/8" Clear	R00255
	Suction Tubing 3/8" PE	R00122
	Suction Tubing 1/4" PE	R00097
16.	Tubing Weight	R00139

Get the Advantage

