

MT Controller - USB Functions

The MT is capable of transferring information using a FAT formatted USB drive. The MT has three main USB functions as detailed in the following sections:

1. Exporting log data
2. Upgrading firmware
3. Cloning user settings for other MT units

Getting Started

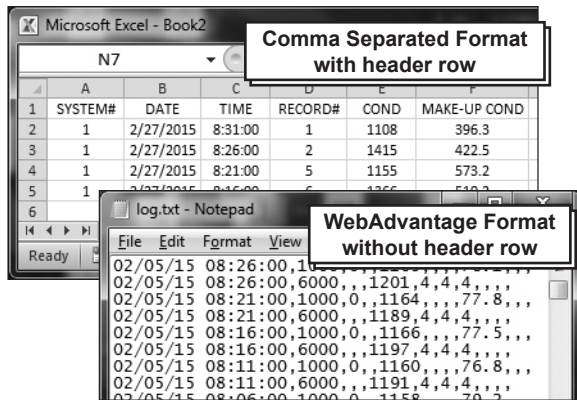
With the controller powered up, plug the USB drive into the MT USB port. The USB DRIVE DETECTED pop-up window will appear.

Notes:

- You may be required to enter a password.
- USB drives must be FAT formatted.
- Not all customized names will be saved.

Exporting Log Data

History from an MT controller can be saved to a USB drive in one of two file formats: WebAdvantage or generic comma separated (default).



Sample Log Data "log.txt" files

To change formats, see Step 2.

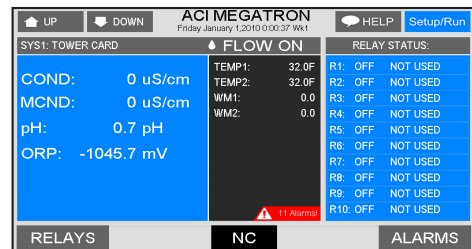
Step 1:

To transfer the contents of the MT history logs to the USB drive, select → **History** → **USB** by using the Arrow buttons. Then press ENTER.

Note: Status will be displayed on the screen to show the percent completed of each log record type. Once the log is completely stored, the pop-up window will close. If only a small amount of data is available the screen may disappear quickly. The USB drive will now contain a file name: example "LOG_AB-1234.TXT". The AB-1234 will be the unit's serial number.

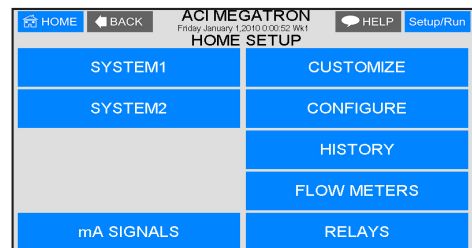
Step 2: Changing the File Format

This is the **RUN** Screen.



Step 3:

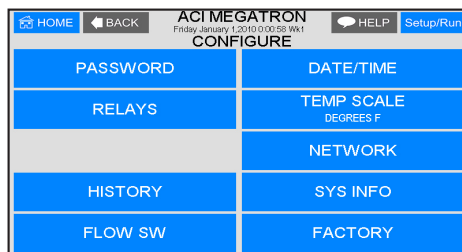
Push the **SET UP RUN** button to get this screen. From here push **CONFIGURE** to go to the next screen.



MT Controller - USB Functions

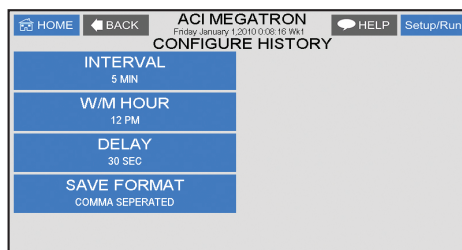
Step 4:

This is the Configure Screen. From here push **HISTORY** to go to the next screen.



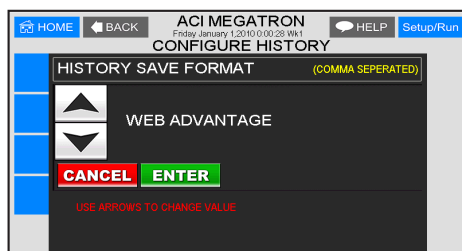
Step 5:

This is the Configure History Screen. From here push **SAVE FORMAT** to go to the next screen.



Step 6:

Set the value of the **HISTORY SAVE FORMAT** by using the arrow keys. Then press **ENTER** to confirm and go to the previous screen.



Note: WebAdvantage format is required for uploading history to WebAdvantage for cloud storage and graphing. Change to Comma Separated format if using a database software like Excel.

Press **SET UP RUN** to return to the RUN screen.

Step 7:

Remove USB drive and re-insert to initiate the USB DRIVE DETECTED pop-up window. Repeat Step 1 from section *Exporting Log Data*.

Uploading data to WebAdvantage

If the controller does not have a communications card you can purchase WEBADV-MT CLOUD storage of your unit's history. This one-time fee per controller allows the MT history to be stored on WebAdvantage for using custom graphing and multiple user internet access. Contact Advantage Controls or support@advantagecontrols.com with your unit's serial number to learn more.

After an MT is set-up for cloud storage, follow these steps:

1. Login to the secure web server: <https://webadvantage.online>
2. Locate the controller you have data for and click **Reports**
3. Click **History Upload** on the left
4. Click **Choose File** and select the file you exported.
5. Click **Submit** and the data will upload
6. You will now be able to view reports and history data once completed.

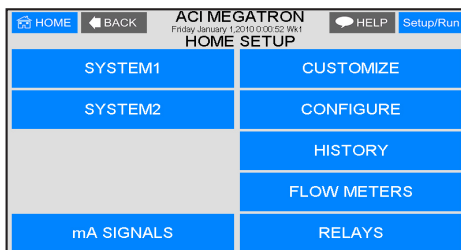
Upgrading Firmware

To upgrade the firmware on your MT, copy the updated software version to a USB drive. The file name should be "firmware.bin" With the controller powered up, plug the USB drive into the MT USB port. The USB DRIVE DETECTED pop-up window will appear. If a password is in the unit, the USB will ask for it.

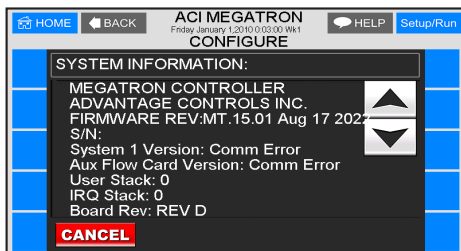
Select --> **Update Firmware** by using the Arrow buttons. Then press ENTER.

MT Controller - USB Functions

Warning: Do not remove power or USB during updating. It may take a few minutes to complete. Once the first update is complete, power off and remove USB. Wait 20-30 seconds to power back on and reinstall the USB after the RUN screen appears and load the firmware a second time. After second update is complete, power down and remove USB. Power back on (after 20 seconds) and go to the Configure menu.



From here push **SYS INFO** and confirm that the unit now has the new version and that the CARD version is also current (consult factory for current).



Warning: If the card revision has not updated to the newer version, the sensor function will not work correctly. A few power cycles may be needed to get the system card updated. The mA input and communications card (if present) may need to be removed with the power off and a power cycle performed. Once the system card version is updated, power back down and reinstall the mA and communications cards.

Cloning User Settings for other MT Units

The MT has the ability to copy the User Settings from one MT to another. This process is referred to as cloning.

Step 1:

With the controller powered up, plug the USB drive into the MT USB port. The USB DRIVE DETECTED pop-up window will appear. Select → **Config** → **USB** (Config to USB) by using the Arrow buttons. Then press ENTER.

The User settings will be saved to the USB drive under the file name “CONFIG.BIN”. The pop-up window will close when the copy is completed.

Step 2:

Plug the USB drive into the MT that you would like to copy the User Settings to. The USB DRIVE DETECTED pop-up window will appear.

Select → **USB** → **Config** (USB to Config) by using the Arrow buttons. Then press ENTER.

CAUTION: Do not choose → Config → USB again or you will save over your USB contained CONFIG.BIN file.

The User Data will be loaded into the MT from the USB drive. Once the pop-up window closes, cloning has been completed.

Notes:

- Not all customized names will be cloned.
- If you have trouble reading clone files, insure that the MT you are cloning has current firmware.