

# WEBX

## INTERNET MONITOR

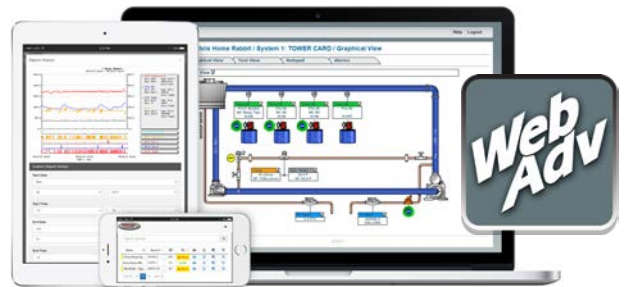
The WEBX monitor saves time and expense by providing real-time readings status and alarms for a wide range of industrial and municipal applications.

Stand-Alone Cloud-Based Alarming, Monitoring, and Reporting of any analog or digital signal via WebAdvantage.



### KEY FEATURES

- Built-In Cellular Option
- Remote Alarms, Alerts, & Status
- Customizable Info/Naming
- 5 or 10 Digital Inputs
- BACnet and Modbus Options
- WebAdvantage Reporting
- Optional Totalizing Flow Inputs
- Up to 16 Analog 4-20 mA Inputs
- Up to 8 Proportional 4-20 mA Outputs



### PRODUCT OVERVIEW

MegaTron WEBX monitors provide local control with web-based alarming and reporting for industrial or municipal applications. WEBX units can receive customizable 4-20mA and dry contact signals to meet application need.

Control relays can activate pumps, valves, alarm systems and more based on user defined settings.

WebAdvantage provides free web-based access of settings, conditions, e-mail alarming to multiple users and unique custom reporting. Optional built-in cellular service for easy start-up and web connectivity.

# BUILD A MODEL..... WEBX - X A X X 1 A X

## Step 1 system card functions

Power Options		95-230 VAC
X	95-230 VAC incoming no 24 VDC	
1	95-230 VAC incoming plus 24 VDC	
Relay Options		(2.5 amp each)
A	(5) dry contact relays	
B	(5) powered relays / conduit	
C	(5) powered relays with liquid tights	
D	(5) powered relays with USA pigtails	
mA In/Out Signals		8 signals max
X	None	
1	(4) mA inputs	
2	(4) mA output control	
3	(4) mA inputs and outputs	
4	(8) mA inputs	
Flow Meter (Pulse) Inputs		
X	None	
A	(4) totalizing flow meter inputs	
Digital Inputs		
1	(5) digital inputs with alarms	
2	(10) digital inputs with alarms	

Additional Enclosure Options	
X	Standard enclosure
1	Mounted in MULTI-BOX (17" x 14" x 9")
2	Mounted in 16" x 14" x 8" enclosure

Cellular Service Options		V=Verizon™, A=AT&T™
A	12 months (V)	
B	12 months with up to 3-month delay (V)	
C	12 months (A)	
D	24 months (V)	
E	Internal router (V) no data sim	

Additional Enclosure Options	
X	Standard enclosure
1	Mounted in MULTI-BOX (17" x 14" x 9")
2	Mounted in 16" x 14" x 8" enclosure

## SPECIFICATIONS

<b>Electrical Input</b>	95-230 VAC, 50/60 Hz
<b>Relay Outputs</b>	Dry contact relays pass through current is limited to 2.5 mA at 28 VDC.
<b>Display</b>	6.875" Diagonal LCD touchscreen
<b>Digital Inputs</b>	Inputs have 10K Ω pullup to 3.3 VDC from open collector open drain output
<b>Flow Totalizing Inputs</b>	10K Ω pullup to 5 VDC max rate 2.5 KHz from open collector open drain output
<b>mA Inputs</b>	Optical isolation, 250 Ω / 5 VDC @ 20 mA. Loop voltage to not exceed 30 VDC.
<b>mA Outputs</b>	Non-isolated. 12 VDC max load = 400 Ω. Isolated ext 24 VDC max load = 800 Ω.
<b>Ethernet</b>	DHCP or static capable with 10/100 WiFi 802.11 (b/g/n)
<b>Approvals</b>	CE, UL61010-1/CSA C22.2 No. 61010-1-12 + A1:2022 (R2022)
<b>Enclosure</b>	NEMA 4X style polycarbonate
<b>Ambient Temp</b>	0° to 125°F (-17° to 52°C)
<b>Shipping Weight</b>	Approximately 10 lbs. (4.536 kg)
<b>Relative Humidity</b>	0 to 100%
<b>Dimensions</b>	11" (27.94cm) W x 11.75" (29.84 cm) H

## RELATED PRODUCTS



Learn more about WebAdvantage



Learn more about water quality monitoring



Learn more about MicroLinx pumps



YOUR ADVANTAGE IN WATER TREATMENT EQUIPMENT

