

BRANCH CIRCUIT PROTECTION
MUST BE PROVIDED EXTERNALLY
(BY CUSTOMER).

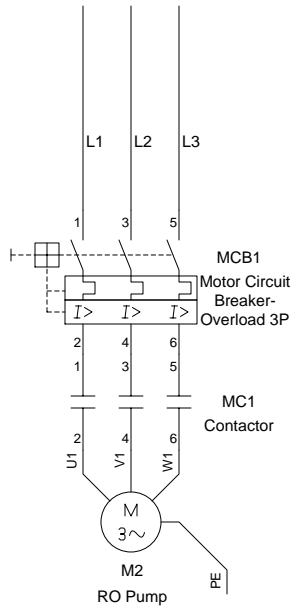
Control Circuit
1 Phase Voltage 50/60HZ

| 120V | 240V |

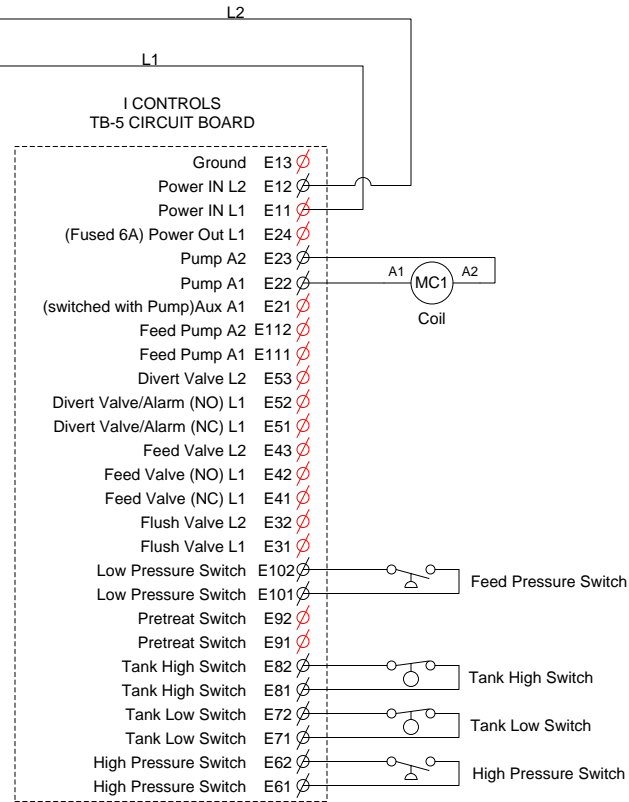
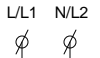
Ref Des	Description	Manuf/Part Number
F1	TB-5, 5x20mm, 6A	Littelfuse 0234.006
F2	TB-5, 5x20mm .25A	Littelfuse 0218.250
MC1	Motor Contactor	LS MC-22b

Motor Circuit
3 Phase Voltage 50/60HZ

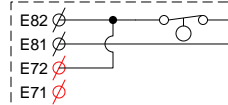
| 208V | 230V | 380V | 460V | 575V |



MCB-1 provides motor branch circuit protection, disconnect, motor overload, phase loss and short circuit protection. External disconnect handle available.



Single Tank Switch Connection



MCB1, Application Table					
Motor HP	208V	220-240V	380-415V	440-460V	550-600V
1	LS MMS-32H-6	LS MMS-32H-6	LS MMS-32H-4	LS MMS-32H-2.5	LS MMS-32H-2.5
1.5	LS MMS-32H-8	LS MMS-32H-8	LS MMS-32H-4	LS MMS-32H-4	LS MMS-32H-2.5
2	LS MMS-32H-10	LS MMS-32H-8	LS MMS-32H-6	LS MMS-32H-4	LS MMS-32H-4
3	LS MMS-32H-13	LS MMS-32H-13	LS MMS-32H-8	LS MMS-32H-6	LS MMS-32H-4
5	LS MMS-32H-22	LS MMS-32H-17	LS MMS-32H-13	LS MMS-32H-10	LS MMS-32H-8
7.5	LS MMS-32H-32	LS MMS-32H-26	LS MMS-32H-18	LS MMS-32H-13	LS MMS-32H-10
10	LS MMS-32H-32	LS MMS-32H-32	LS MMS-32H-22	LS MMS-32H-17	LS MMS-32H-13
15	-	-	LS MMS-32H-32	LS MMS-32H-26	LS MMS-32H-22
20	-	-	-	-	LS MMS-32H-26