

ICM2 UPGRADE FOR BACNET AND MODBUS IN MEGATRON MT & XT UNITS

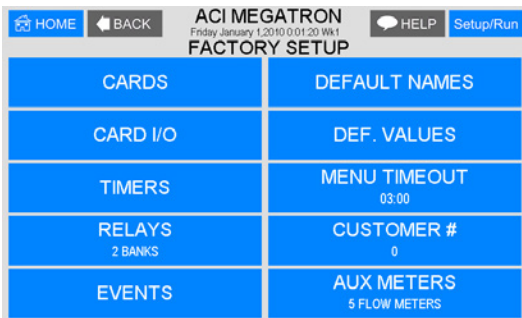
The ICM2 BMS communications card for BACnet and Modbus BMS communications introduced in September of 2025 must be used with MegaTron MT firmware MT.17.12 or newer. There are several new additions to the firmware to allow the use of the newer BMS cards. The new firmware can be downloaded from this Advantage Controls website link:

<https://www.advantagecontrols.com/firmware/>

Download the firmware onto a USB with nothing else on it and upgrade the MegaTron MT's firmware before trying to install the new BMS communications card. After the controller's firmware has been updated you will need to get the daily factory password from our customer service department to proceed. Follow the steps below:

Step 1:

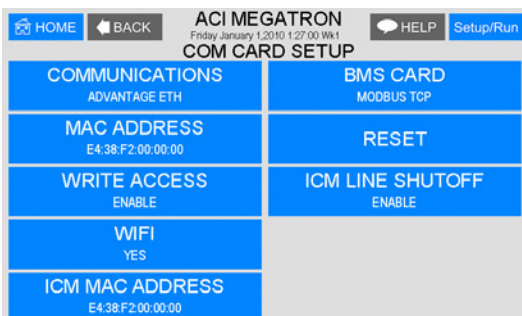
From the **CONFIGURE** menu select **FACTORY** and enter the daily factory password to gain access to Factory settings. Once in the Factory settings select the **CARDS** selection to access the COM CARD SETUP.



Step 2:

From the COM CARD SETUP screen you will be able to:

- Set the **ICM LINE SHUTOFF** to "Enable"
- Select the correct **BMS CARD** type for the new ICM2 card. Note: The selection for Modbus is MODBUS TCP not MODBUS RTU (the RTU option is not supported yet)



After setting the BMS card type and pressing enter a 45 second countdown stores the ICM2 settings. When the count down completes press **Setup/Run** button in the top corner.

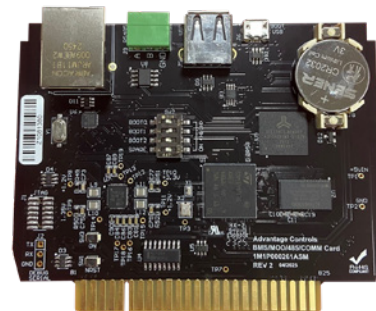
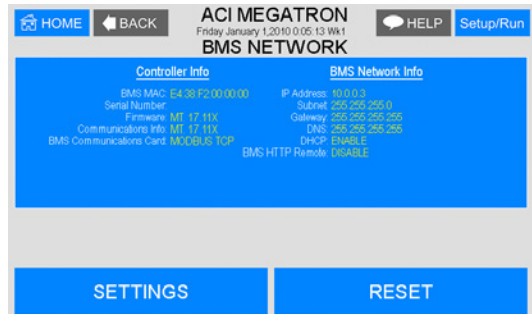
Step 3:

Go back into the **CONFIGURE** menu and back into the **FACTORY** settings using the daily password. Go back to CARDS and access the COM CARD.

- Enter the **ICM MAC ADDRESS** provided by Advantage Controls on a sticker on the back of the ICM2 card. After pressing ENTER to set the MAC address press the SET/Run button in the the top corner.

Step 4:

Press the Setup/Run button and then select CONFIGURE to access the NETWORK settings. Here you will finish setting up the communications to your specified BMS communications type in the BMS NETWORK settings not the "WA" (WebAdvantage) NETWORK settings.



ICM2 UPGRADE FOR BACNET AND MODBUS IN MEGATRON XS & XT UNITS

The ICM2 BMS communications card for BACnet and Modbus BMS communications introduced in September of 2025 must be used with MegaTron XS firmware KA.16.24 or newer.

Download the firmware onto a USB with nothing else on it and upgrade the MegaTron XS's firmware before trying to install the new BMS communications card. After the controller's firmware has been updated you will need to get the daily factory password from our customer service department to proceed.

The steps below show the correct Factory settings to use the ICM2 for dual network configurations:

Step 1:

From the Configure menu select Factory and enter the daily factory password to gain access to Factory settings. Once in the Factory settings select the CARDS selection to access the Communication card settings.

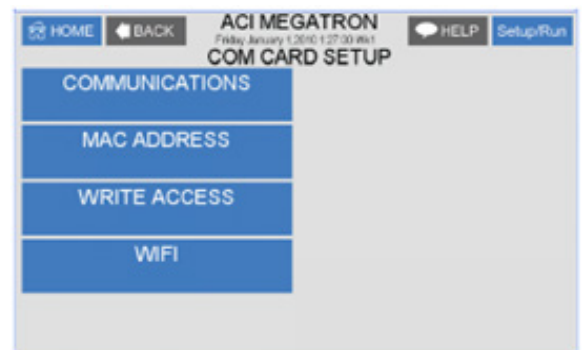


Step 2:

From the Communications card setting you will be able to:

- Select the correct communications card type for the new ICM2 card. The selection for Modbus is MODBUS TCP and BACnet is BACNET.

After setting the BMS card type and pressing enter a 45 second countdown stores the ICM2 settings. Press the **Setup/Run** button in the top corner.



Step 3:

Go back into the **CONFIGURE** menu and back into the **FACTORY** settings using the daily password. Go back to CARDS and access the COM CARD.

- Enter the **ICM MAC ADDRESS** provided on a sticker on the back of the ICM2 card.

After pressing ENTER to set the MAC address press the SET/Run button in the the top corner.

Step 4:

Press the Setup/Run button and then select CONFIGURE to access the NETWORK settings. Here you will finish setting up the communications to your specified BMS communications type.