

ICM2 Upgrade for BACnet and Modbus in MegaTron MT Controllers

The ICM2 BMS communications card for BACnet and Modbus BMS communications introduced in September of 2025 must be used with MegaTron MT firmware MT.17.12 or newer. There are several new additions to the firmware to allow the use of the newer BMS cards. The new firmware can be downloaded from this Advantage Controls website link:

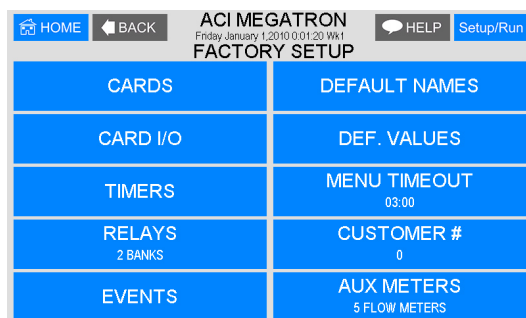
<https://www.advantagecontrols.com/firmware/>

Download the firmware onto a USB with nothing else on it and upgrade the MegaTron MT's firmware before trying to install the new BMS communications card. After the controller's firmware has been updated you will need to get the daily factory password from our customer service department to proceed.

The steps below show the correct Factory settings to use the ICM2 for dual network configurations:

Step 1:

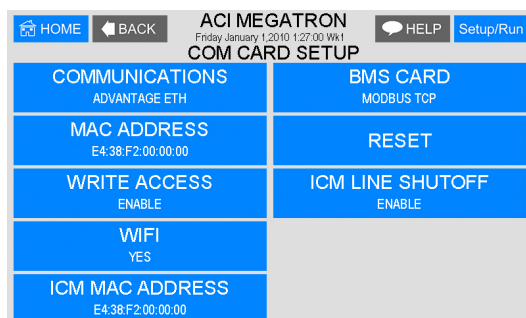
From the **CONFIGURE** menu select **FACTORY** and enter the daily factory password to gain access to Factory settings. Once in the Factory settings select the **CARDS** selection to access the COM CARD SETUP.



Step 2:

From the COM CARD SETUP screen you will be able to:

- Enter the **ICM MAC ADDRESS** provided by Advantage Controls for your specific serial number unit.
- Set the **ICM LINE SHUTOFF** to "Enable"
- Select the correct **BMS CARD** type for the new ICM2 card. Note: The selection for Modbus is MODBUS TCP not MODBUS RTU (the RTU option is not supported yet)



Step 3:

After making the desired BMS card type and pressing enter there will be a 45 second countdown to store the settings into the ICM2. You must let this time count down before proceeding. Once it is complete and all Factory settings set, press the **Setup/Run** button in the top left corner.

Step 4:

Press the Setup/Run button and then select CONFIGURE to access the NETWORK settings. Here you will finish setting up the communications to your specified BMS communications type in the BMS NETWORK settings not the "WA" (WebAdvantage) NETWORK settings.

